

Warwick Street / Squire and Partners

05:00 - 28 May, 2018

Save this project

Like 61 Tweet PinIt



Architects	: Squire and Partners
Location	: 6 Warwick Street, SOHO London, United Kingdom
Lead Architects	: Squire and Partners
Area	: 2344.0 m2
Project Year	: 2018
Photographs	: Gareth Gardner
Manufacturers	: Schüco, VMZINC, Vola, Ibstock, Diespeker



Text description provided by the architects. Squire and Partners has extensively re-modelled an existing 1980's building to create a vibrant development that maintains its previous office and retail uses, but makes a more meaningful connection with the surrounding Soho Conservation Area by creating a contemporary crafted design.



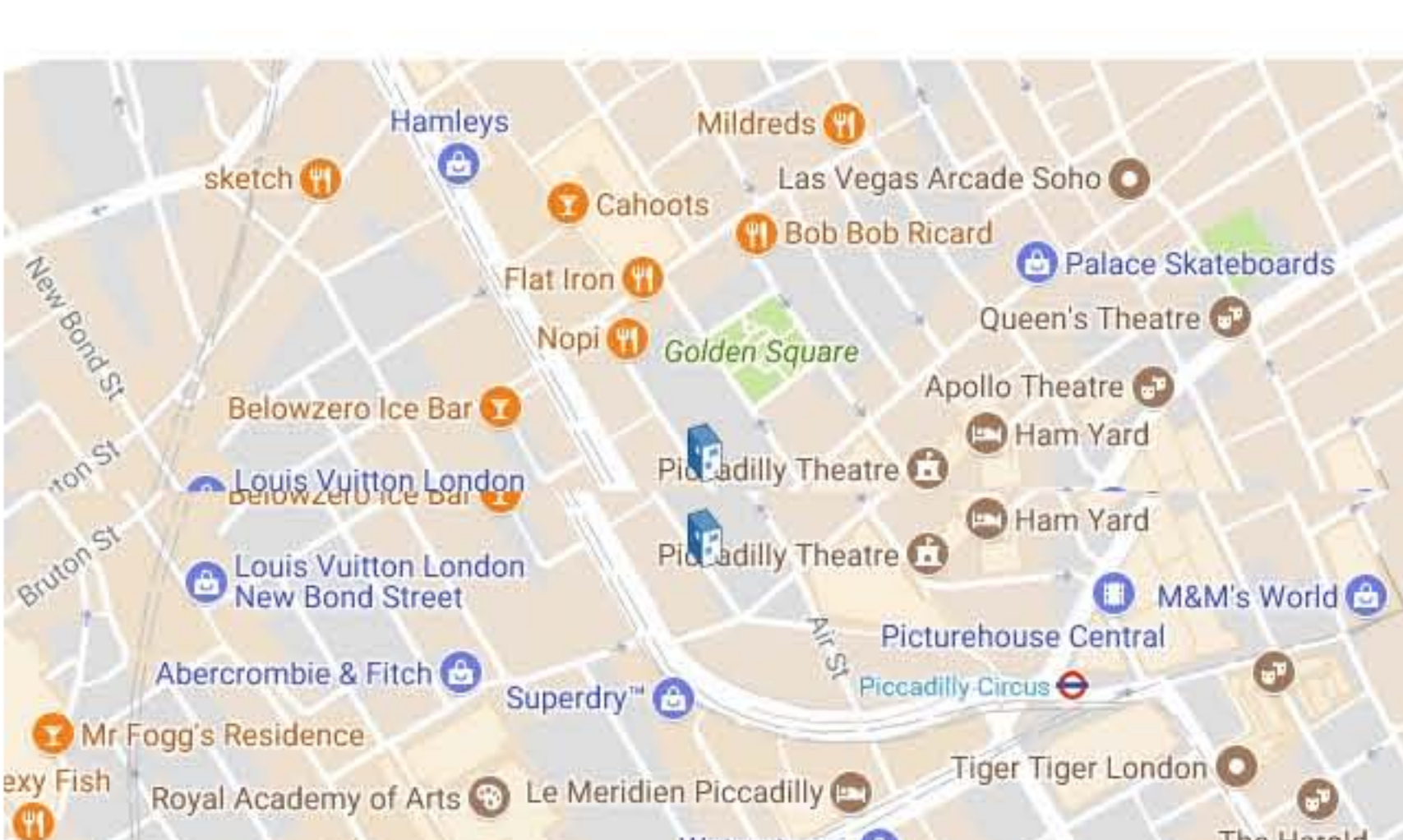
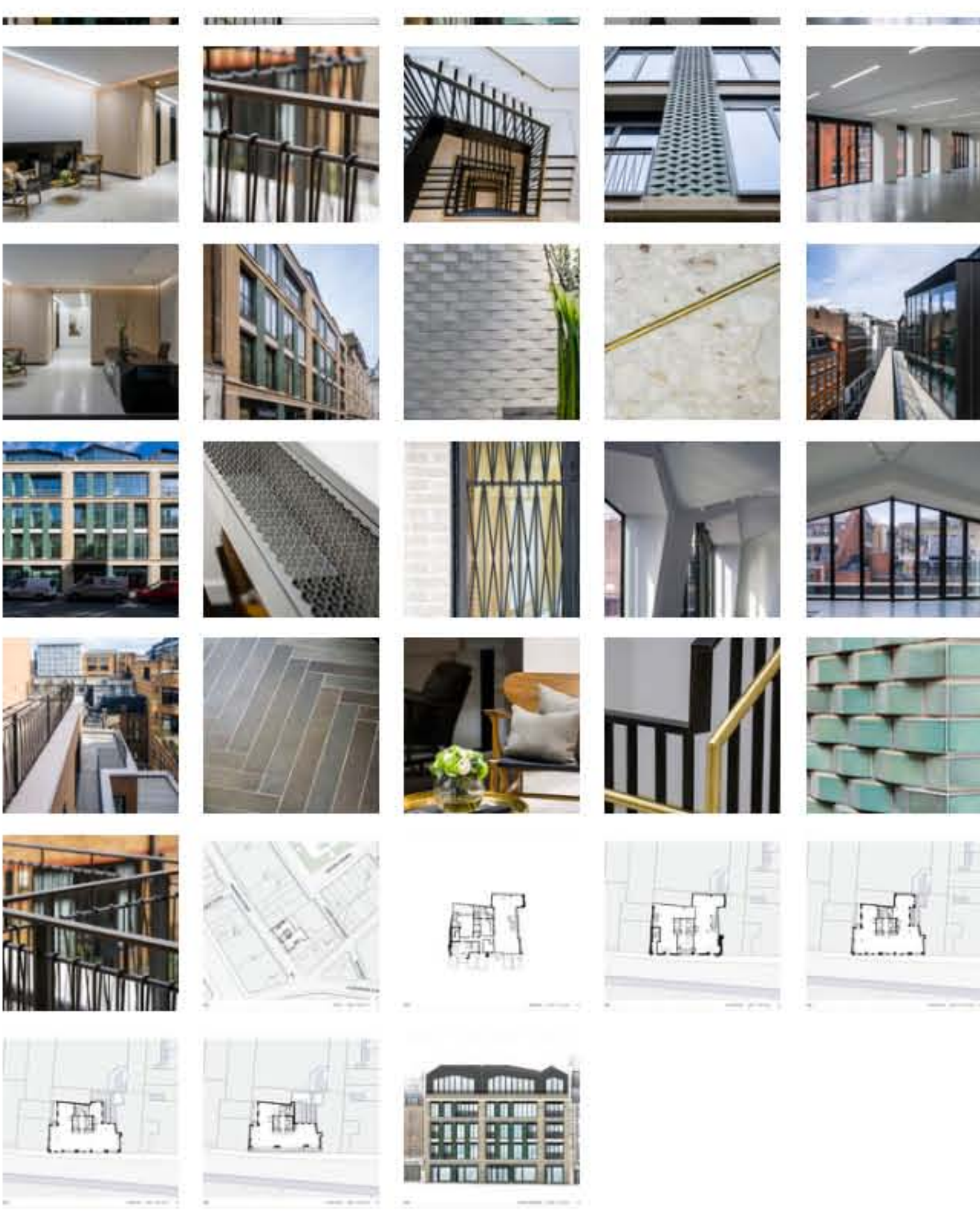
High quality office and retail spaces are provided within the existing building structure behind a new facade, while a new top floor is expressed as an irregular folded mansard.



The new facade establishes a rational frame of glazed Umbra Sawtooth bricks with stone spandrels, animated with vertical bands featuring 'woven' green tiles that pay tribute to the area's textile history, and relate to the glazed tiles which define the surrounding streets.



The metal-clad top floor creates a bold interpretation of a modern mansard roof, the erratic playful form making a nod to Soho's history of rebellion and the inherent creativity which defines the local culture.



Location to be used only as a reference. It could indicate city/country but not exact address.



CLICK TO EXPAND

MORE FROM SQUIRE AND PARTNERS

- The Department Store / Squire and Partners
- Planning Finally Granted for Chelsea Barracks Scheme
- The Studio / Squire and Partners

MORE OFFICES

- AZPML and SHARE Selected to Design 115-Meter Viennese Office Tower
- Inventronics Technology Park / gad
- Roca Agro Offices / Sergio Alberto Cabrera Arquitectos

More Offices >

MOST VISITED

- How Tree Trunks Are Cut to Produce Wood With Different Appearances and Uses
- House in a Flat / nitton architects
- The Creative Process of Zaha Hadid, As Revealed Through Her Paintings

MOST VISITED PRODUCTS

- Terracotta Rainscreen Facade System - LONGOTON® Vertical Panels | Shildan
- Walkover / Wall Recessed - Nanoled Stainless Steel | SIMES
- | Shildan



CLICK TO EXPAND

About Contact Submit Advertise